



LED CONNECTOR

ELECTRICITY INTERCONNECT SOLUTION

LED LIGHTING
INTERCONNECT
SOLUTION

www.mylikeled.com
100+ Patents World Wide



MLL & LNLED®

Development
Design
Manufacture

CATEGORY

- | | | | |
|-----------|-------------------------|-----------|------------------------|
| 03 | • Beetle Clip X | 19 | • Hippo-M Solid |
| 05 | • Beetle Clip Invisible | 21 | • Snap SR |
| 07 | • Beetle Clip | 23 | • Snap DJ |
| 09 | • Screw Fixing | 25 | • Wire Joint X |
| 11 | • Hippo-M MINI | 27 | • Pluggable Wire Joint |
| 13 | • Hippo-M X | 29 | • Wire Joint J |
| 15 | • Hippo-M Series | 29 | • Mounting clip |
| 17 | • Hippo-M Tube | | |

Beetle Clip X



Easy to operate



Solderless



Seamless connection



Transparent material



Mini housing



Unblock light source

Multiple connection form in one model



Material: Housing Polycarbonate Conductor High Precision Cu

Housing Color: Transparent

Pin Quantity: 2 Pins

Workable SMD(PART)/COB Strip:Width 5mm、8mm、10mm/Standard IP20

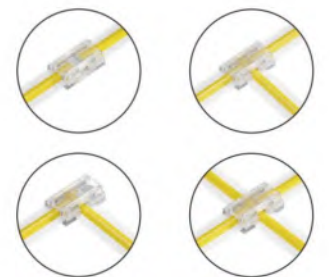
Mono Workable Wire:22#~20#AWG

Max Current: 5A (Low Voltage)

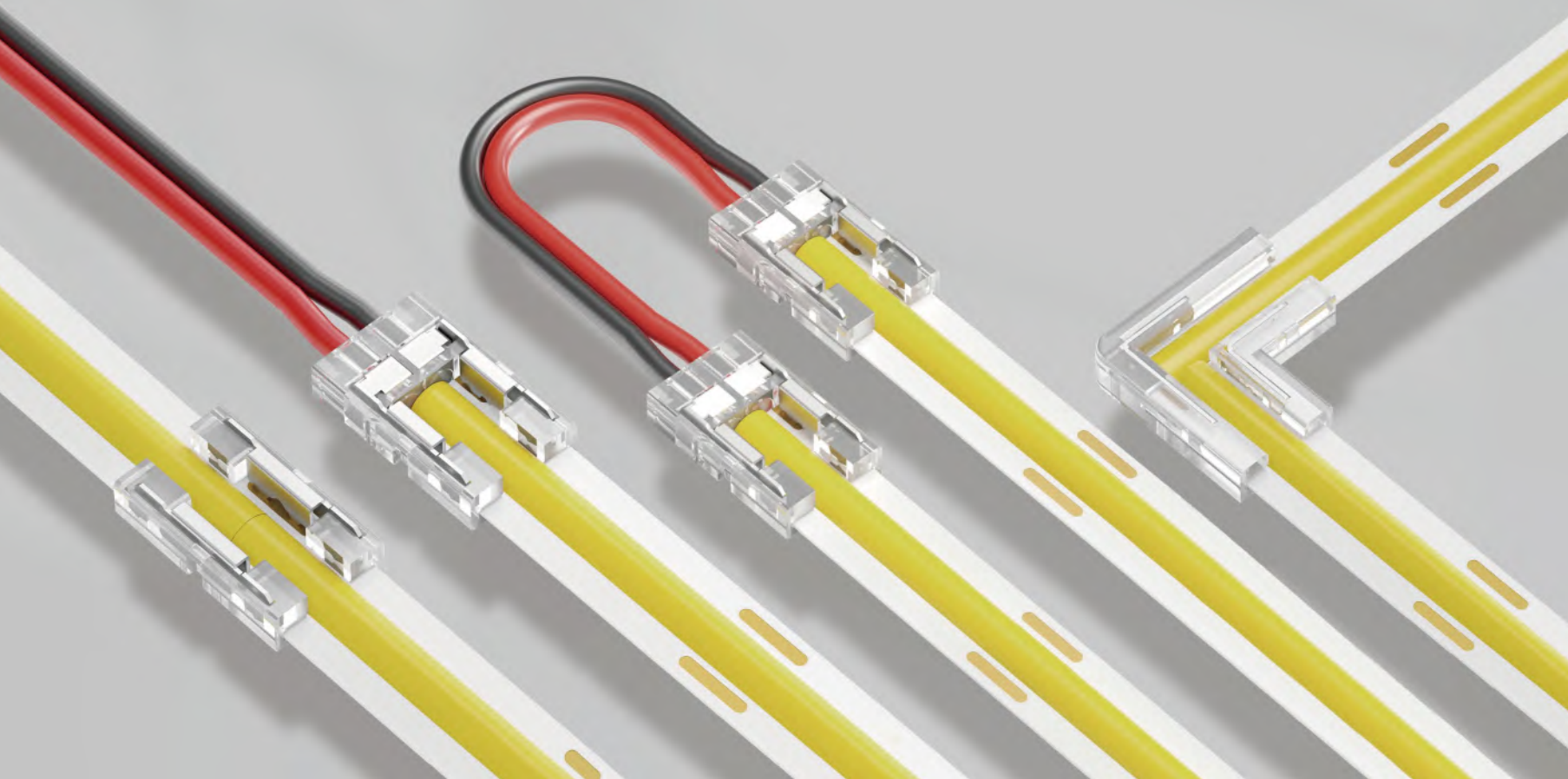
Note: For wire connectors, please refer to the maximum rated current of the wire

Certificates: RoHs CE

Application Field : Lighting, Architecture, Home, etc.



Beetle Clip Invisible



Zero mask over light like invisible

Material: Housing Polycarbonate Conductor High Precision Cu

Housing Color: Transparent

Pin Quantity: 2 Pins~6 Pins

Workable SMD(PART)/COB Strip: Width 5mm、6mm、8mm、10mm、12mm

Standard IP20 Mono, CCT, RGB, RGBW, RGBCCT

Workable Wire:22#~20#AWG

Max Current: 5A(Low Voltage)

Note: For wire connectors, please refer to the maximum rated current of the wire

Certificates: RoHs CE

Application Field : Lighting, Architecture, Home,etc.



Easy to
operate



Solderless



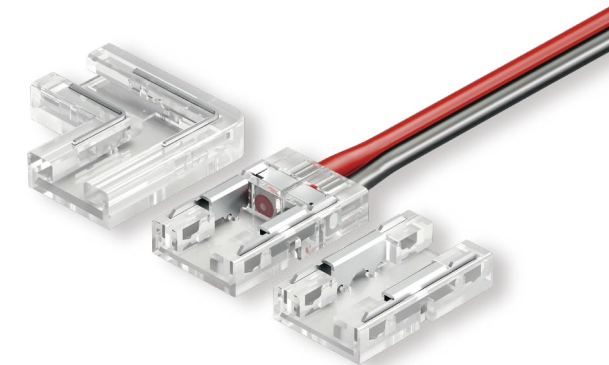
Transparent
material

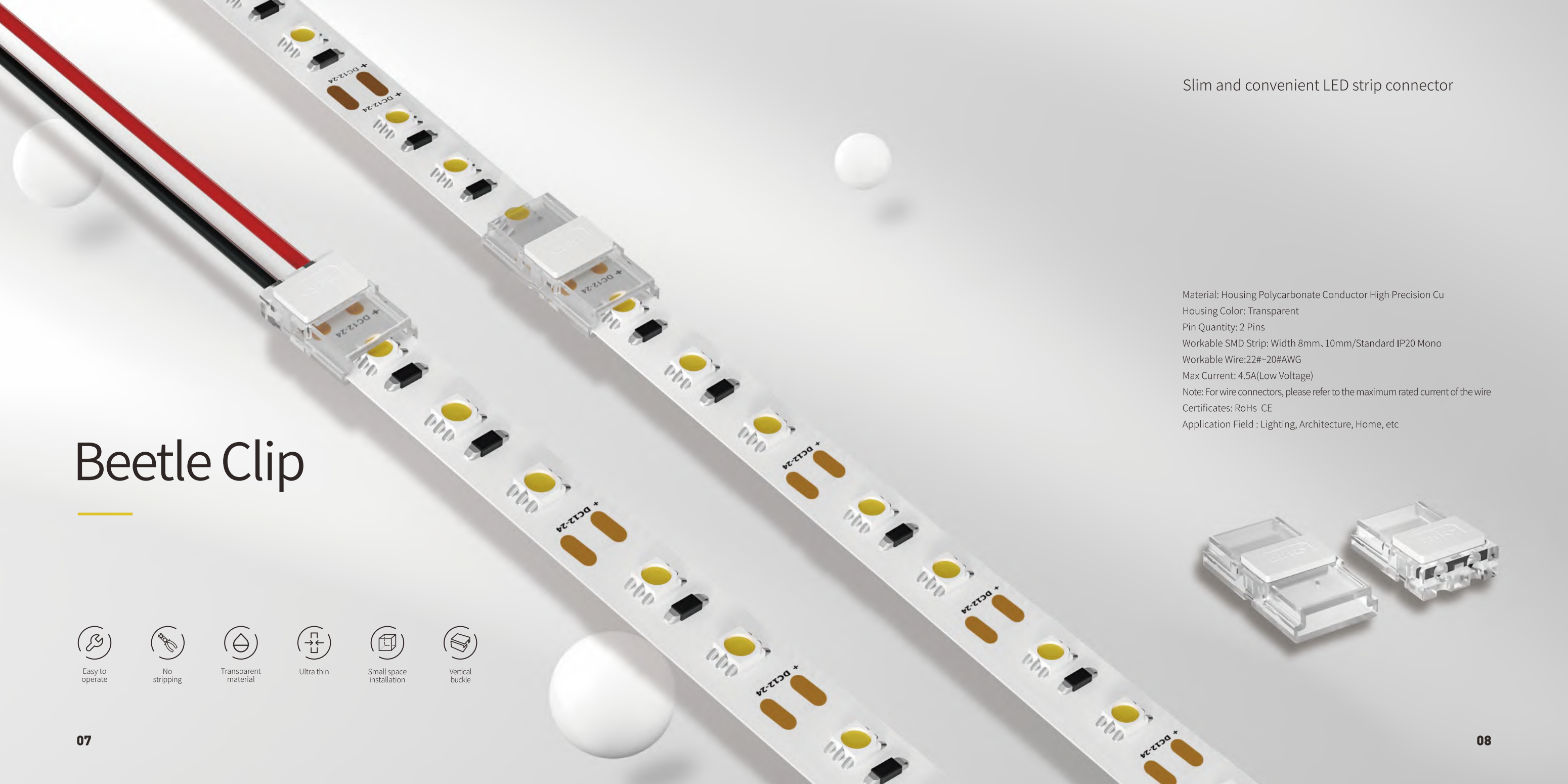


Ultra thin



Unblock light
source





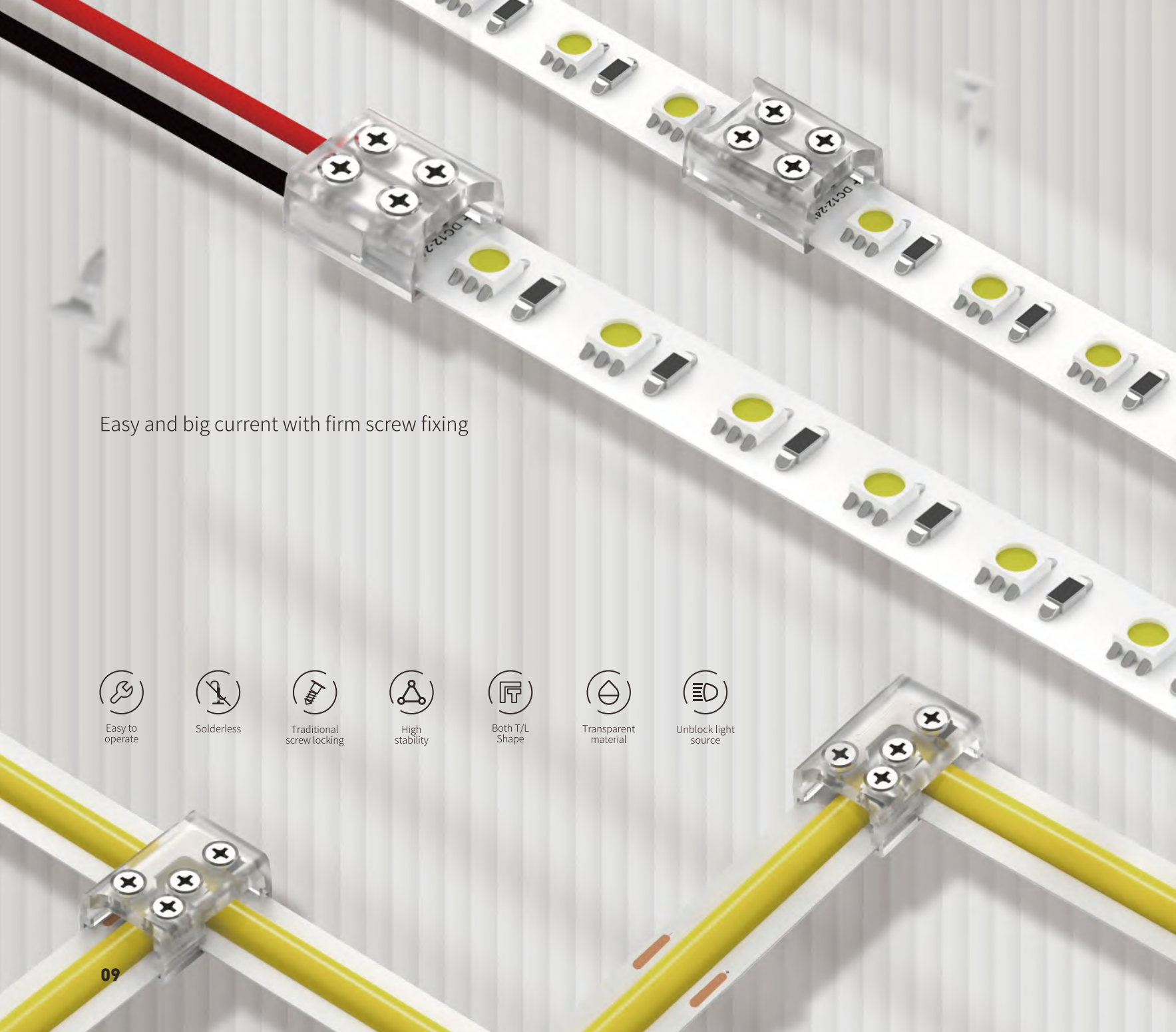
Beetle Clip

-  Easy to operate
-  No stripping
-  Transparent material
-  Ultra thin
-  Small space installation
-  Vertical buckle

Slim and convenient LED strip connector

Material: Housing Polycarbonate Conductor High Precision Cu
Housing Color: Transparent
Pin Quantity: 2 Pins
Workable SMD Strip: Width 8mm、10mm/Standard IP20 Mono
Workable Wire:22#~20#AWG
Max Current: 4.5A(Low Voltage)
Note: For wire connectors, please refer to the maximum rated current of the wire
Certificates: RoHs CE
Application Field : Lighting, Architecture, Home, etc





Easy and big current with firm screw fixing



Easy to operate



Solderless



Traditional screw locking



High stability



Both T/L Shape

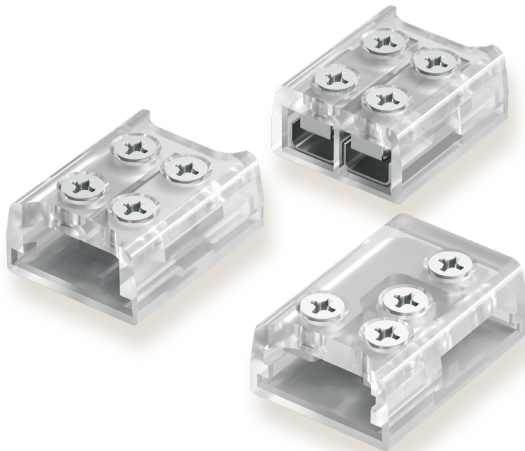


Transparent material



Unblock light source

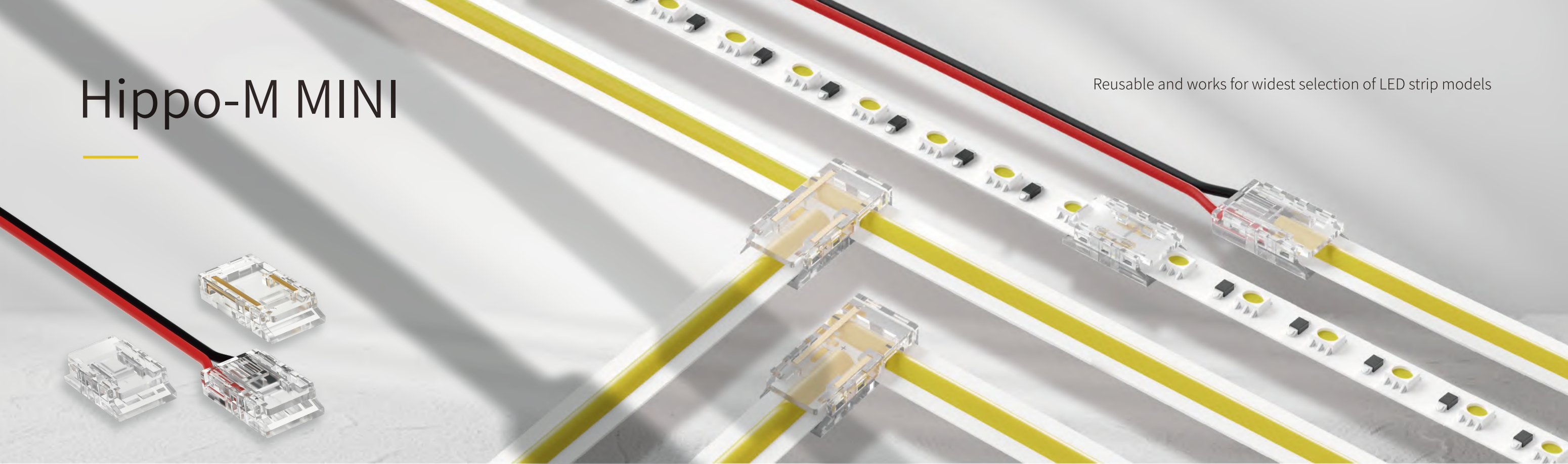
Screw Fixing



Material: Housing Polycarbonate Conductor High Precision Cu
Housing Color: Transparent
Pin Quantity: 2 Pins& T/L Shape
Workable SMD(PART)/COB Strip: Width 8mm、10mm/Standard IP20 Mono
Workable Wire:22#~18#AWG
Max Current: 6A
Note: For wire connectors, please refer to the maximum rated current of the wire
Certificates: RoHs CE
Application Field : Lighting, Architecture, etc.

Hippo-M MINI

Reusable and works for widest selection of LED strip models



Material: Housing Polycarbonate Conductor High Precision Cu
Housing Color: Transparent
Pin Quantity: 2 Pins~6 Pins
Workable SMD(PART)/COB Strip:
Width 5mm、8mm、10mm、12mm
Standard IP20 Mono、CCT、RGB、RGBW、RGBCCT
Workable Wire:22#AWG
Max Current:3. 5A
Note: For wire connectors, please refer to the maximum rated current of the wire
Certificates: RoHs CE UL
Application Field : Lighting, Architecture, etc.



Easy to operate



Solderless



Seamless connection



Transparent material



Mini housing



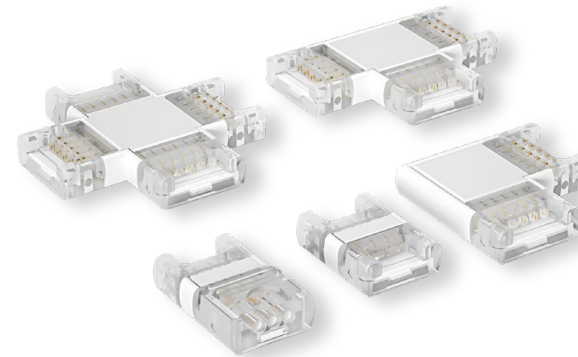
Unblock light source



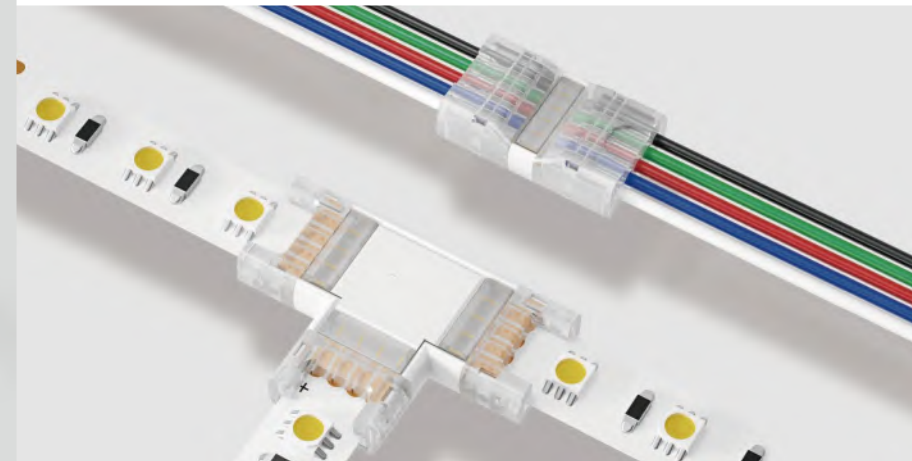
Both T/L Shape

Hippo-M X

Most completed types for LED strip connection



Material: Housing Polycarbonate Conductor High Precision Cu
Housing Color: White, Transparent
Pin Quantity: 2 Pins~6 Pins
Workable SMD(PART)/COB Strip:
Width 5mm、8mm、10mm、12mm
Standard IP20 Mono, CCT, RGB, RGBW, RGBCCT
Workable Wire: 22#~18#AWG
Max Current: 5A
Note: For wire connectors, please refer to the maximum rated current of the wire
Certificates: RoHs CE
Application Field : Lighting, Architecture, etc.



Express
Installation



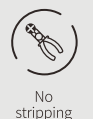
Solderless



High
stability



Vertical
buckle



No
stripping



Multiple corner
models

Hippo-M Series

Popular and convenient
LED strip connector



Material: Housing Polycarbonate Conductor High Precision Cu
Housing Color: Black, White, Transparent
Pin Quantity: 2 Pins~6 Pins
Workable SMD(PART)/COB Strip:
Width 5mm, 8mm, 10mm, 12mm
Standard IP20-IP54 Mono, CCT, RGB, RGBW, RGB CCT
Workable Wire: 22#~18#AWG
Max Current: 5A
Note: For wire connectors, please refer to the maximum rated current of the wire
Certificates: RoHs CE
Application Field : Lighting, Architecture, etc.



Express
Installation



Solderless



High
stability



Flip type
buckle



No
stripping



Unblock light
source



Easy to
install

Hippo-M Tube



Express
Installation



Solderless



High
stability



Flip type
buckle



No
stripping



Unblock light
source



Glue Injection
Waterproof

Stable connector for hollow tube LED strip light

Material: Housing Polycarbonate Conductor High Precision Cu

Housing Color: White, Transparent

Pin Quantity: 2 Pins~5 Pins

Workable SMD Strip: Width 8mm, 10mm, 12mm / Standard IP65 Mono, CCT, RGB, RGBW

Workable Wire: 22#~20#AWG

Max Current: 5A

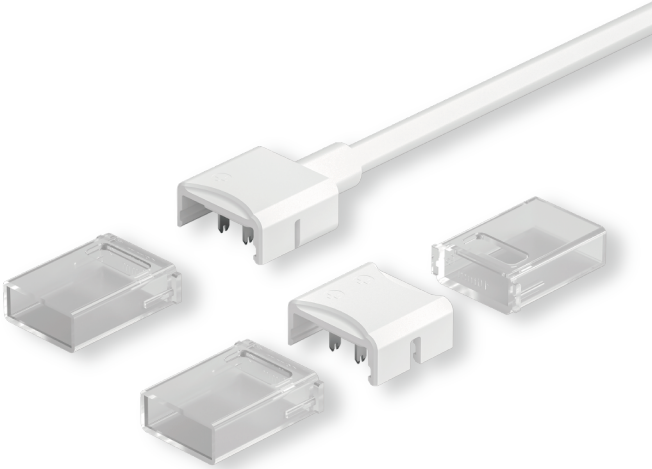
Note: For wire connectors, please refer to the maximum rated current of the wire

Certificates: RoHs CE

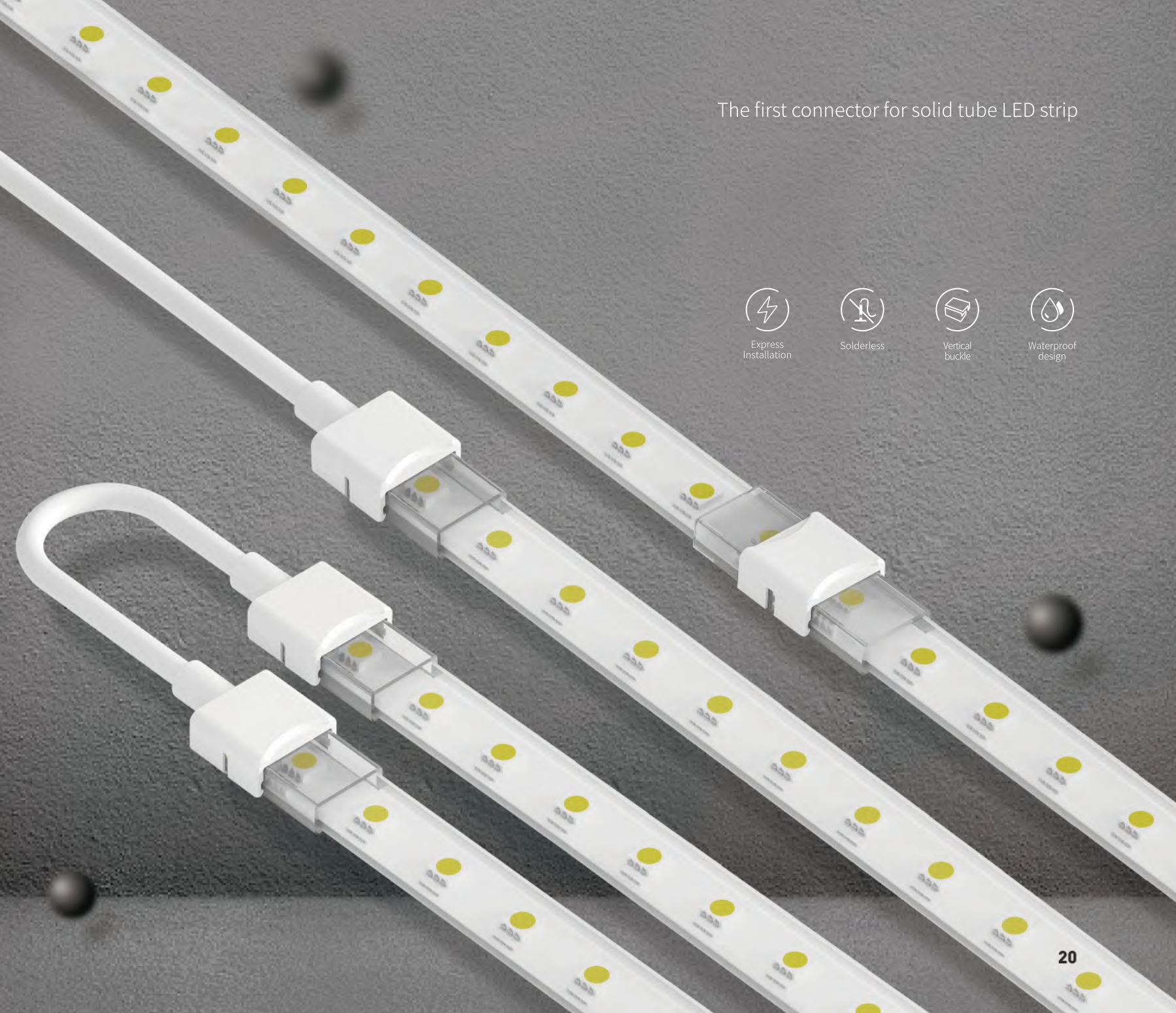
Application Field : Lighting, Architecture, etc.

Hippo-M Solid

Material: Housing Polycarbonate Conductor High Precision Cu
Housing Color: White, Transparent
Pin Quantity: 2 Pins~5 Pins
Workable SMD(PART)/COB Strip:
Width 8mm, 10mm, 12mm
Standard IP65、IP78 Mono、CCT、RGB、RGBW
Workable Wire:22#~20#AWG
Max Current: 5A
Note: For wire connectors, please refer to the maximum rated current of the wire
Certificates: RoHs CE
Application Field : Lighting, Architecture, etc.



The first connector for solid tube LED strip



Snap SR

Very easy to use

Material: Housing Nylon Conductor High Precision Cu
Housing Color: White
Pin Quantity: 2 Pins~5 Pins
Workable SMD Strip:
Width 8mm、10mm、12mm
Standard IP20 Mono、CCT、RGB、RGBW
Workable Wire:22#~20#AWG
Max Current: 2.5A (Low Voltage)
Note: For wire connectors, please refer to the maximum rated current of the wire
Certificates: RoHs
Application Field : Lighting, Architecture, Home, etc.



Express
Installation



Solderless



Flip over
insertion



Common
version



Easy to
install

Snap DJ

Material: Housing Nylon Conductor High Precision Cu
Housing Color: Black, White, Transparent
Pin Quantity: 2 Pins~6 Pins
Workable COB/SMD Strip:
Width 8mm, 10mm, 12mm
Standard IP54 Mono, CCT, RGB, RGBW
Workable Wire: 22#~20#AWG
Max Current: 3.5A
Note: For wire connectors, please refer to the maximum rated current of the wire
Certificates: RoHS CE
Application Field : Lighting, Architecture, etc.

- 

Express Installation
- 

Solderless
- 

Easy to operate
- 

Flip over insertion
- 

Common version
- 

Easy to install

Specific version for IP20/IP65 strip light

Wire Joint X



Material: Housing Polycarbonate Conductor High Precision Cu
Housing Color: Transparent
Pin Quantity: 1 Pin~6 Pins
Workable Wire:24#~14#AWG
Max Current: 1.5A-10A
Note: For wire connectors, please refer to the maximum rated current of the wire
Certificates: RoHs CE
Application Field : Lighting, Architecture, Automotive, Electrical & Electronics,
Security, Machinery, Model Aerospace, Automation, etc.

Connect multiple cables simultaneously without stripping

- 
express setup
- 
Solderless
- 
Transparent material
- 
Mini housing
- 
Vertical cover buckle
- 
No stripping of wire skin
- 
High stability

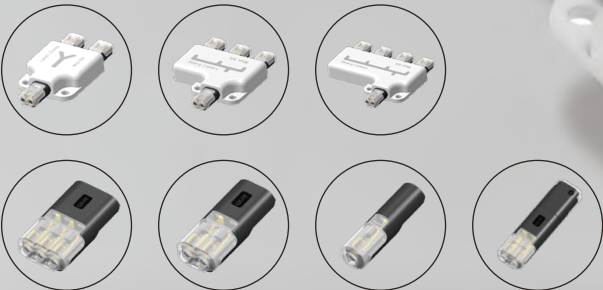
Pluggable Wire Joint

Make wire connection more flexible

Material: Housing Polycarbonate Conductor High Precision Cu
Housing Color: Black & Transparent
Pin Quantity: 1 Pin(Small size&Big Size), 2 Pins(Small size&Big Size), 3 Pins(Small size)
Workable Wire:Small 22#~20#AWG, 18-16#AWG
Max Current: 3.5A-10A
Note: For wire connectors, please refer to the maximum rated current of the wire
Certificates: RoHs CE
Application Field : Lighting, Medical, Architecture, Automotive, Electrical & Electronics, Security, Machinery, Model Aerospace, Automation, etc.



- Express Installation
- No need for male and female mating
- Mini housing
- Flip type buckle
- Dedicated distribution box
- No stripping
- Wide application fields



Wire Joint J



Material: Housing Polycarbonate Conductor High Precision Cu

Housing Color: Red, Transparent

Pin Quantity: 1 Pins~3 Pins (Include I Shape,Y Shape, T Shape) Big Size/Small Size

Workable Wire:22#~14#awg

Max Current: 3.5A~10A

Note: For wire connectors, please refer to the maximum rated current of the wire

Certificates: RoHs CE

Application Field : Lighting, Medical, Architecture, Automotive, Electrical & Electronics, Security, Machinery, Model Aerospace, Automation, etc.



Express Installation



Red and transparent



Flip over insertion



No stripping of wire skin



Easy to install



Hot Connection

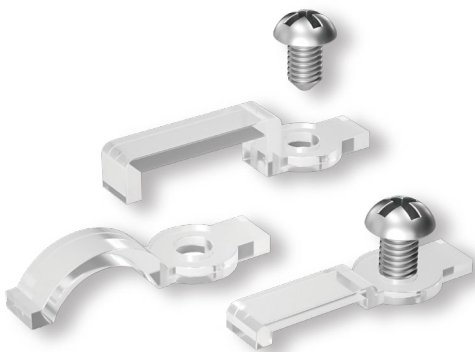


Safe and reliable

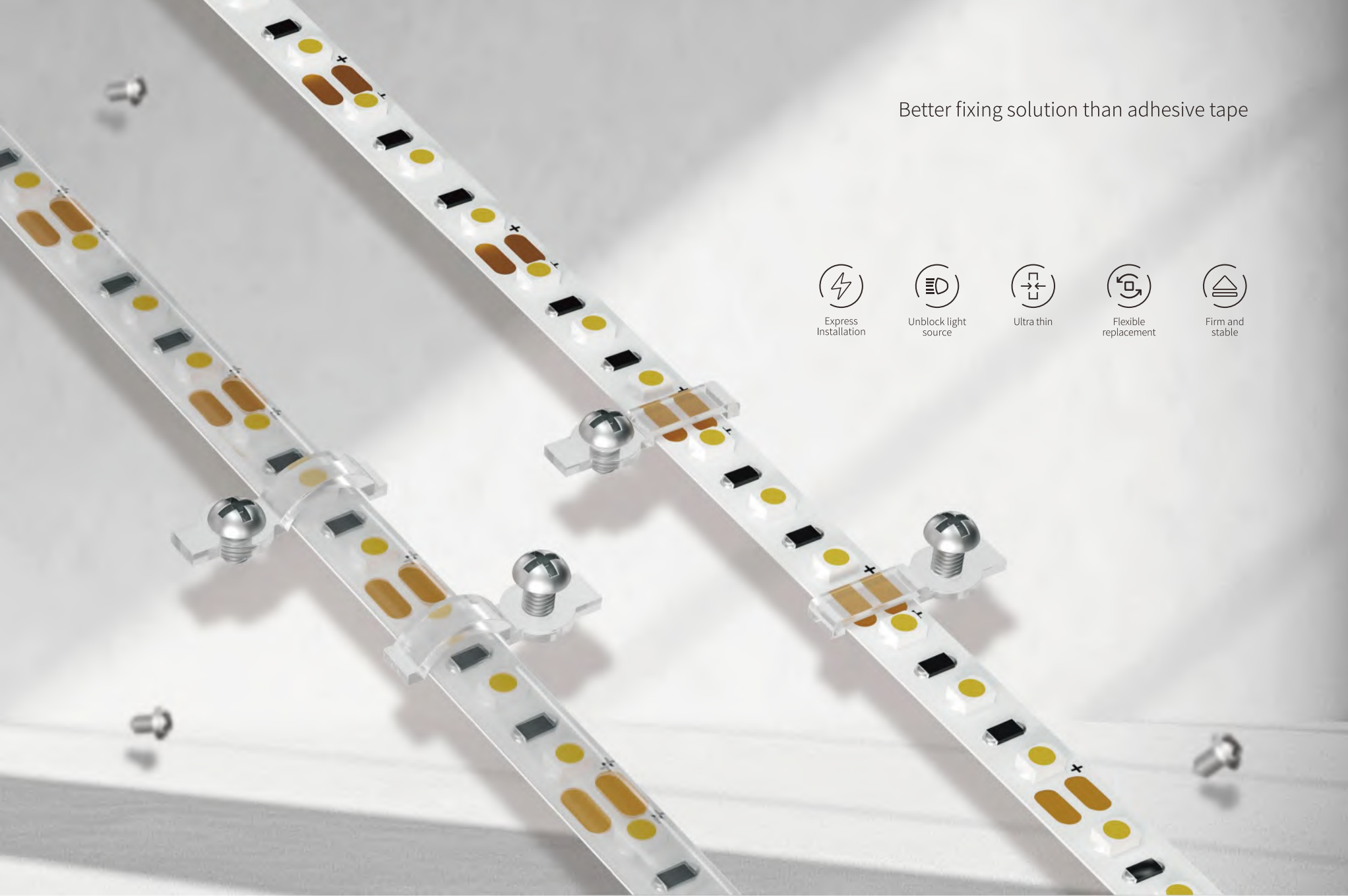
Better organized & more efficient wiring solution



Mounting clip



Material: Housing Polycarbonate
Housing Color: White, Transparent
Workable Strip Width: 8mm-12mm
Workable SMD(PART)/COB Strip:
Width 8mm, 10mm, 12mm/IP20 IP54 IP65 IP67
Certificates: RoHs CE
Application Field : Lighting, Architecture, etc.



Better fixing solution than adhesive tape



Express
Installation



Unblock light
source



Ultra thin



Flexible
replacement



Firm and
stable

Note Page

Note Page
