

Wall Mounted Touch Panel

Model No.: T1, T2, T3, T4

1-4 color/Glass panel/Touch color wheel/DC input/4 channel constant voltage PWM output/Wireless remote control



CE RoHS LVD

Features

- Touch panel single color, dual color, RGB or RGBW PWM constant voltage controller.
- Ultra sensitive high strength glass touch panel with touch color wheel in the middle .
- Compatibility with RF 2.4G single zone or multiple zone remote control.
- Touch keys with LED indicator.
- White & Black glass panel available.

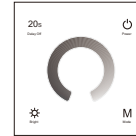
Technical Parameters

Input and Output				
Model	T1	T2	T3	T4
Input voltage	12-24VDC	12-24VDC	12-24VDC	12-24VDC
Input current	12.5A	12.5A	12.5A	12.5A
Output voltage	4 x [12-24]VDC	4 x [12-24]VDC	3 x [12-24]VDC	4 x [12-24]VDC
Output current	4CH, 3A/CH	4CH, 3A/CH	3CH, 4A/CH	4CH, 3A/CH
Output power	144-288W	144-288W	144-288W	144-288W
Output type	Constant voltage	Constant voltage	Constant voltage	Constant voltage
Light type	Single color	Dual color	RGB	RGBW

Safety and EMC		Environment	
EMC standard [EMC]	EN301 489,EN 62479	Operation temperature	Ta: -30°C ~ +55°C
Safety standard[LVD]	EN60950	Case temperature (Max.)	Tc: +85°C
Radio Equipment[RED]	EN300 328	IP rating	IP20
Certification	CE,EMC,LVD,RED	Warranty and Protection	
Weight		Warranty	5 years
Net weight	0.118kg	Protection	Reverse polarity Over heat Short circuit
Gross weight	0.230kg		

Key function

• T1 Single color panel



- ⏻ — Turn on/off light.
- ⦿ — Brightness wheel.
- ☼ — Brightness, 10 levels.
- 20s — Turn off light after 20s.
- M — Dynamic mode, 6 level speed.

• T2 Dual color panel



- ⏻ — Turn on/off light.
- ☼ — Brightness +, 10 levels.
- ☼ — Brightness -, 10 levels.
- ⦿ — Color temperature wheel.
- M — Dynamic mode, 6 level speed.

• T3 RGB panel



- ⏻ — Turn on/off light.
- ⦿ — Color wheel.
- ☼ — Brightness, 10 levels.
- ⏸ — Adjust dynamic mode speed, 10 levels.
- M — Short press play 10 built-in dynamic mode, long press 2s run mode-cycle.

• T4 RGBW panel

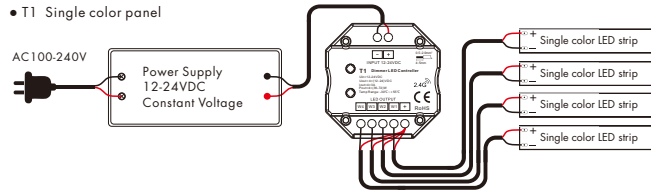


- ⏻ — Turn on/off light.
- ⦿ — Color wheel.
- ⏸ — Adjust dynamic mode speed or static color brightness, 10 levels.
- M — Short press play 10 built-in dynamic mode, long press 2s run mode-cycle.
- 1 2 3 4 — 4 Scenes, short press recall scene, long press 2s to save the current color into 1/2/3/4.
- R G B W — Short press get red, green, blue, white color, long press adjust each color brightness.

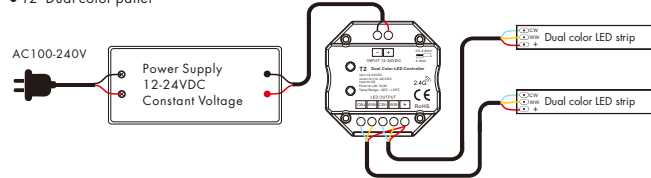
Turn on key tone: Long press power key for 5s when light is off, will turn on or turn off key tone.

Wiring diagram

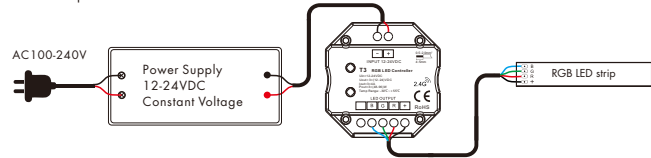
• T1 Single color panel



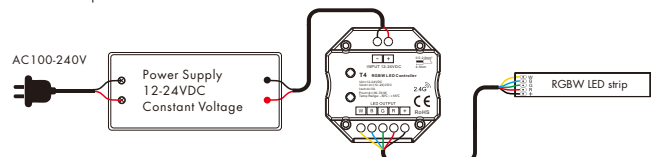
• T2 Dual color panel



• T3 RGB panel



• T4 RGBW panel



Match Remote Control (two match ways)

The touch panel controller can also match with the RF remote (optional).

End user can choose the suitable match/delete ways. Two options are offered for selection:

Use On/Off key

Match:

Turn on light, turn off, immediately press the On/Off key of the panel for 5s, then press on/off key (single zone remote) or zone key (multiple zone remote) of the RF remote within 5s. The LED indicator fast flash 6 times means match is successful.

Delete:

Turn on light, turn off, immediately press the On/Off key of the panel for 10s, delete all matched RF remote. The LED indicator fast flash 6 times means all matched remotes were deleted.

Use Power Restart

Match:

Switch off the power, then switch on power again, immediately short press on/off key (single zone remote) or zone key (multiple zone remote) 3 times on the remote. The light blinks 3 times means match is successful.

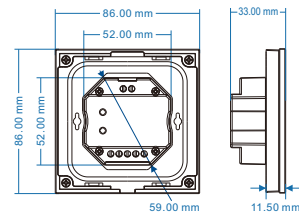
Delete:

Switch off the power, then switch on power again, immediately short press on/off key (single zone remote) or zone key (multiple zone remote) 5 times on the remote. The light blinks 5 times means all matched remotes were deleted.

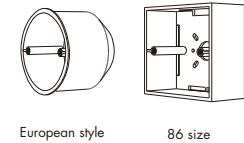
RGB/RGBW dynamic mode list (only for T3 / T4)

No.	Name	No.	Name
1	RGB jump	6	RGB fade in and out
2	RGB smooth	7	Red fade in and out
3	ó color jump	8	Green fade in and out
4	ó color smooth	9	Blue fade in and out
5	Yellow cyan purple smooth	10	White fade in and out

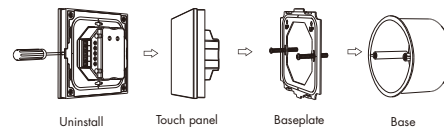
Mechanical Structures and Installations



Typical base as below:



Installation diagram:



LED power supply voltage and power select :

- 12V lamp, Input 12V power supply, can load 0~144W.
- 24V lamp, Input 24V power supply, can load 0~288W, The power supply must larger than load power 20%.